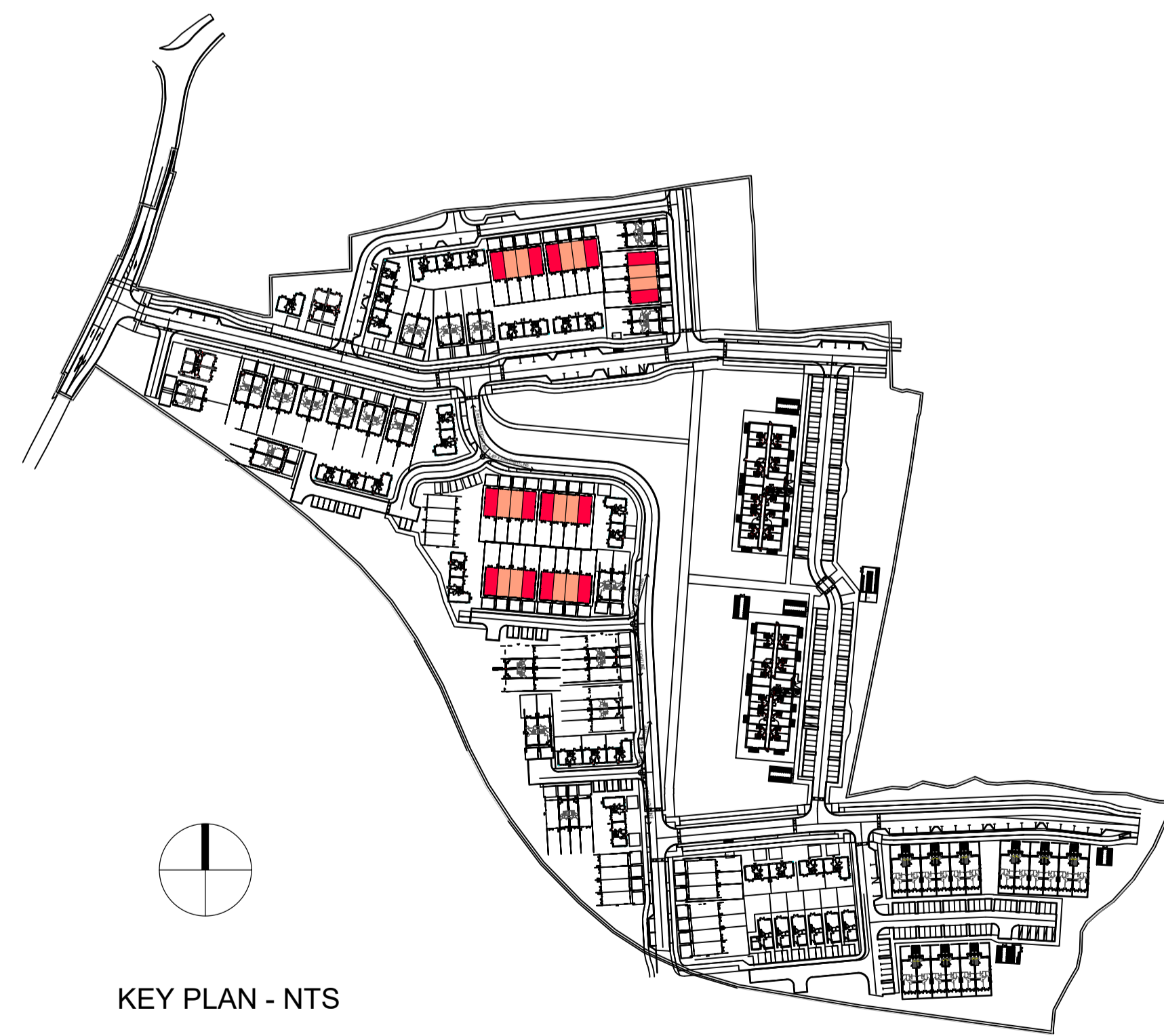
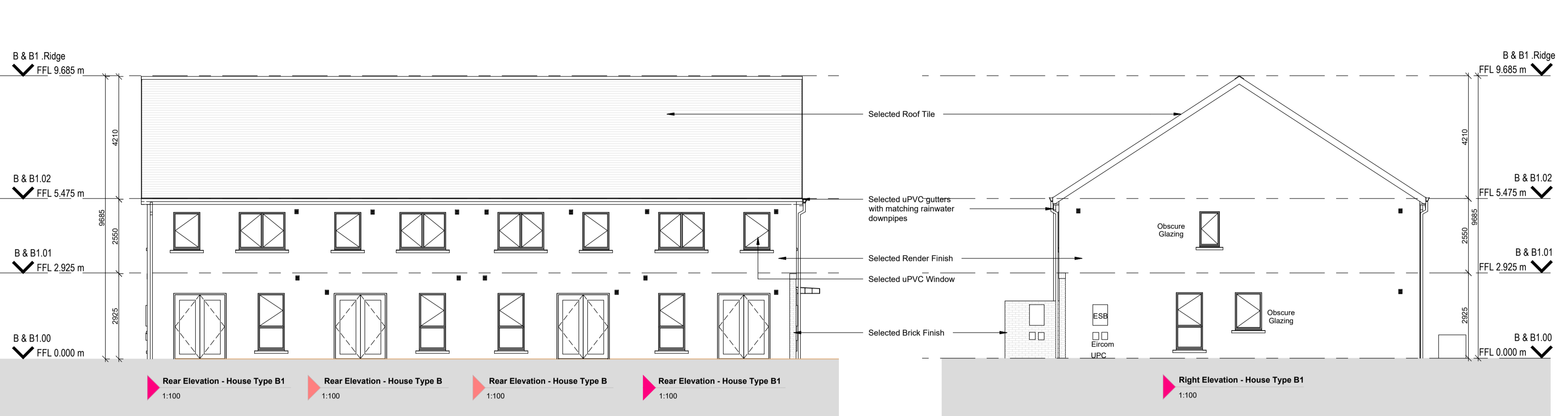
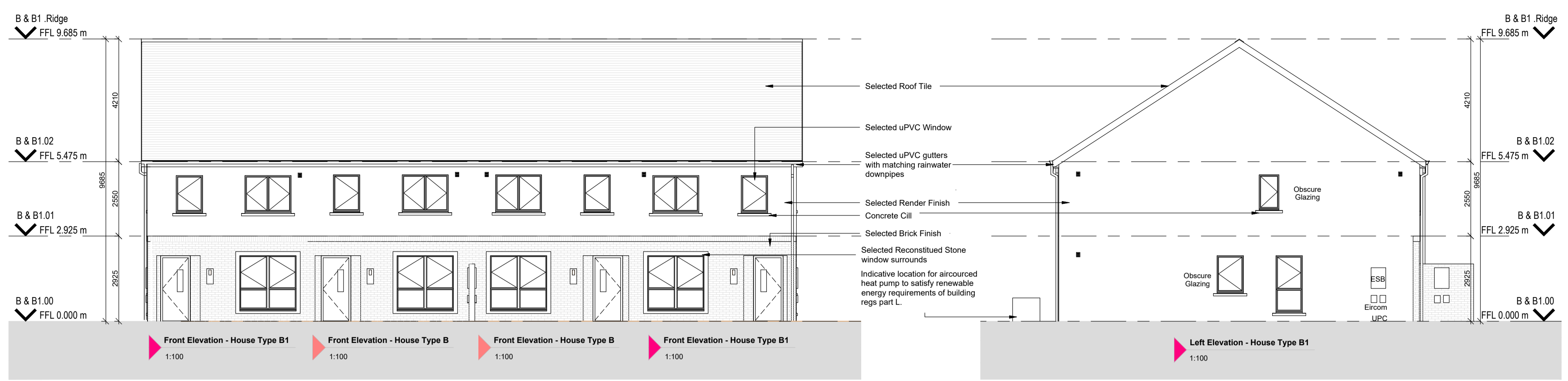


NOTES / LEGEND

- FOR NORTH POINT AND LEVELS PLEASE REFER TO SITE LAYOUT PLAN



B Room Schedule	
Name	Area
Kitchen / Dining Room	21.15 m²
Hallway	7.97 m²
Living Room	17.03 m²
WC	2.37 m²
Utility	3.75 m²
Store	0.54 m²
Bedroom 1	15.45 m²
Bedroom 3	8.23 m²
Bedroom 2	12.33 m²
HP	0.66 m²
Bathroom	4.76 m²
En-Suite	4.16 m²
Store	2.62 m²
Total Floor Area =	117.26m2

Aggregate Living Area	38.18m2
Ground Floor GIFA	57.812m2
Aggregate Bed Area	36.01m2
First Floor GIFA	59.45m2
Attic Storage	2.8m2
Total Storage	8.22m2

B1 Room Schedule	
Name	Area
Kitchen / Dining Room	20.98 m²
Hallway	7.85 m²
Living Room	17.00 m²
WC	2.29 m²
Utility	3.74 m²
Store	0.54 m²
Bedroom 1	15.27 m²
Bedroom 2	12.26 m²
Bedroom 3	8.11 m²
HP	0.69 m²
Bathroom	4.72 m²
En-Suite	4.16 m²
Store	2.62 m²
Total Floor Area =	116.402m2

Aggregate Living Area	37.98m2
Ground Floor GIFA	57.392m2
Aggregate Bed Area	35.64m2
First Floor GIFA	59.010m2
Attic Storage	2.8m2
Total Storage	8.22m2

North Point: _____

Rev: 01, 10/06/2022, ISSUED FOR PLANNING

Date: 02/06/2022

Description: _____

By: NN

Drawing Status: PLANNING

Client: CAIRN HOMES PROPERTIES LIMITED

Project: Newcastle South

Drawing: House Type B1 & B & B1 Terraced Units

Date: 02/06/2022

Scale: As Indicated @ A1

Drawing No.: NSC21- MOLA - PX - ZZ - DR - A - XX - 0415 - P

Revision: 01

Telephone: +353 1 218 3900

www.mola.ie

© COPYRIGHT This drawing or design may not be reproduced without permission